

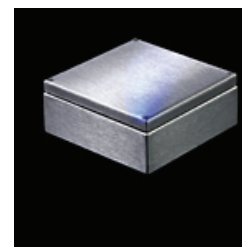
Delivery Range Terminal Boxes BL-KK up to IP68 Standard Delivery Programme



STEELDESIGN

Terminal boxes, extremely resilient, up to IP68

- Material:** Stainless steel 1.4301, AISI 304*
Stainless steel 1.4404, AISI 316L, (V4A)*
Stainless steel 1.4571, AISI 316Ti, (V4A)*
- Material thickness:** See table
- Surface:** polished, grain size 240
- Protection class:** IP68, >NEMA 4X
- Closing:** welded-on multifunction nuts
Screw connection with recessed screws and conical guide, attached outside of the sealing space
- Seal:** Silicone seal 7 mm x 10 mm
- Wall attachment:** IP66: Attachment bore diameter 7 mm
IP67/IP68: Housing without attachment bore
Optional: Attachment is performed via welded-on wall tabs with attachment bore (please indicate in your order)*
- Dimensions:** **See table. Other sizes available.**
*please indicate in your order



Designation	Size in (mm) height	x	Width	x	Depth	Material-thickness (mm)
BL-KK 101006	100	x	100	x	60	1.25
BL-KK 101506	100	x	150	x	60	1.25
BL-KK 102006	100	x	200	x	60	1.25
BL-KK 151508	150	x	150	x	80	1.25
BL-KK 153008	150	x	300	x	80	1.25
BL-KK 154008	150	x	400	x	80	1.25
BL-KK 202008	200	x	200	x	80	1.25
BL-KK 202012	200	x	200	x	120	1.25
BL-KK 203008	200	x	300	x	80	1.25
BL-KK 203012	200	x	300	x	120	1.25
BL-KK 204012	200	x	400	x	120	1.25
BL-KK 206012	200	x	600	x	120	1.25
BL-KK 303012	300	x	300	x	120	1.25
BL-KK 303016	300	x	300	x	160	1.25
BL-KK 304016	300	x	400	x	160	1.25
BL-KK 305016	300	x	500	x	160	1.25
BL-KK 383816	380	x	380	x	160	1.25
BL-KK 405016	400	x	500	x	160	1.25
BL-KK 406016	400	x	600	x	160	1.25

Terminal boxes with the standard equipment above, but in other dimensions can also be calculated and ordered online now www.gehäusekalkulator.de

Technical changes reserved at any time
04/2012