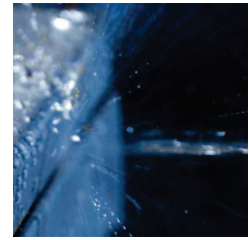


Technical Description Wall Housings Standard Design SL-WG IP69K



STEELDESIGN



Material:	Stainless steel 1.4301, AISI 304 Stainless steel 1.4404, AISI 316L (V4A) Stainless steel 1.4571, AISI 316Ti (V4A)
Material thickness:	Design of housing sizes always 2mm BL-WG 1215 (HxWxD) 180x240x150mm / t=2.0mm BL-WG 14104 (HxWxD) 1400x1000x400mm / t=2.0mm
Areas of use:	Our wall housings can be used in different areas: Inside and outside, offshore, railway, automotive
Temperature areas:	-20°C to +90°C
Protection class:	IP69K, both with gap 0 technology and the patented Convex canting
Inspections/ certificates:	Protection class tests IP69K (See - steeldesign.de/downloads-zertifikate)
Closing:	DIN-double bit sash 3mm, lock housing, zinc-die-casting black, sash tab zinc-plated, < 600mm height: 1 pc. > 600mm height: 2 pc. > 800mm width: 4 pc. > 1,000mm height: 5 pc.
Hinges:	Stainless steel hinges in the door contour, i.e. the door has an opening angle of 180°
Door/setup:	Door stop on the right, door stop on the left, multiple doors and middle bridge fixed, Door reinforcement in the delivery scope when installing 180° hinges
Protection/ safety:	Grounding set M6x16, DIN EN 60439-1:1994
Seal:	Neopren seal 6x20mm, Silicone seal 6x20mm,
Installations/ accessories:	Assembly plate steel sheet zinc-plated <1000mm longest side 2mm material thickness Assembly plate steel sheet zinc-plated >1000mm longest side 3mm material thickness
Surface:	polished, grain size 240

Technical changes reserved at any time
04/2012