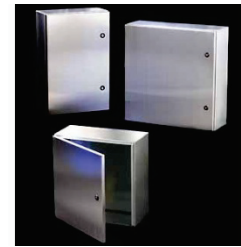


# Delivery Range Wall Housing up to IP 66 and NEMA 4X Standard Delivery Programme

## Wall housings, extremely resilient, up to IP66

<b>Material:</b>	Stainless steel 1.4301, AISI 304* Stainless steel 1.4404, AISI 316L, (V4A)* Stainless steel 1.4571, AISI 316Ti, (V4A)*
<b>Material thickness:</b>	See table
<b>Surface:</b>	polished, grain size 240
<b>Protection class:</b>	IP66, NEMA 4X
<b>Hinges:</b>	Stainless steel 130° hinge* and (t=2mm180° hinge*) Door stop right*, door stop left*
<b>Seal:</b>	Neoprene seal 6x20mm* or silicone seal 6x20mm*
<b>Wall attachment:</b>	4 bores, diameter 10.5 mm and embossing*
<b>Dimensions:</b>	<b>See table. Other sizes available.</b> *please indicate in your order



Designation	Size in (mm)		x	Width	x	Depth	Material-thickness (mm)	Material-thickness MP (mm)	No. of Sashes
	Height								
BL-WG 1215	180		x	240	x	150	1.25	2	1
BL-WG 2215	240		x	240	x	150	1.25	2	1
BL-WG 2315	240		x	360	x	150	1.25	2	1
BL-WG 3215	360		x	240	x	150	1.25	2	1
BL-WG 3315	360		x	360	x	150	1.25	2	1
BL-WG 3324	360		x	360	x	240	1.25	2	1
BL-WG 3415	360		x	480	x	150	1.25	2	1
BL-WG 3424	360		x	480	x	240	1.25	2	1
BL-WG 4315	480		x	360	x	150	1.25	2	1
BL-WG 4324	480		x	360	x	240	1.25	2	1
BL-WG 4415	480		x	480	x	150	1.5	2	1
BL-WG 4424	480		x	480	x	240	1.5	2	1
BL-WG 5315	540		x	360	x	150	1.5	2	1
BL-WG 5324	540		x	360	x	240	1.5	2	1
BL-WG 7324	720		x	360	x	240	1.5	2	2
BL-WG 7724	720		x	720	x	240	1.5	2	2

Wall housings as the standard equipment above, but in other dimensions can also be calculated and ordered online now [www.gehaeusekalkulator.de](http://www.gehaeusekalkulator.de)

# Delivery Range Wall Housing up to IP 66 and NEMA 4X Standard Delivery Programme

## Wall housings, extremely resilient, up to IP66

<b>Material:</b>	Stainless steel 1.4301, AISI 304* Stainless steel 1.4404, AISI 316L, (V4A)* Stainless steel 1.4571, AISI 316Ti, (V4A)*
<b>Material thickness:</b>	See table
<b>Surface:</b>	polished, grain size 240
<b>Protection class:</b>	IP66, NEMA 4X
<b>Hinges:</b>	Stainless steel 130° hinge* and (t=2mm180° hinge*) Door stop right*, door stop left*
<b>Seal:</b>	Neoprene seal 6x20mm* or silicone seal 6x20mm*
<b>Wall attachment:</b>	4 bores, diameter 10.5 mm and embossing*
<b>Dimensions:</b>	<b>See table. Other sizes available.</b> *please indicate in your order



Designation	Size in (mm) Height	x	Width	x	Depth	Material-thickness (mm)	Material-thickness MP (mm)	Number Sashes
BL-WG 3032	300	x	300	x	200	1,25	2	1
BL-WG 3042	300	x	400	x	200	1,25	2	1
BL-WG 4032	400	x	300	x	200	1,25	2	1
BL-WG 4042	400	x	400	x	200	1,5	2	1
BL-WG 4062	400	x	600	x	200	1,5	2	1
BL-WG 5042	500	x	400	x	200	1,5	2	1
BL-WG 5052	500	x	500	x	200	1,5	2	1
BL-WG 6042	600	x	400	x	200	1,5	2	2
BL-WG 6052	600	x	500	x	200	1,5	2	2
BL-WG 6053	600	x	500	x	300	1,5	2	2
BL-WG 6062	600	x	600	x	200	1,5	2	2
BL-WG 6063	600	x	600	x	300	1,5	2	2
BL-WG 6083	600	x	800	x	300	1,5	2	2
BL-WG 8062	800	x	600	x	200	1,5	2	2
BL-WG 8063	800	x	600	x	300	1,5	2	2
BL-WG 8064	800	x	600	x	400	1,5	2	2
BL-WG 8082	800	x	800	x	200	1,5	2	2
BL-WG 8083	800	x	800	x	300	1,5	2	2
BL-WG 8084	800	x	800	x	400	2	2	2
BL-WG 10083	1000	x	800	x	300	2	3	STS
BL-WG 10084	1000	x	800	x	400	2	3	STS
BL-WG 10103	1000	x	1000	x	300	2	3	STS
BL-WG 10104	1000	x	1000	x	400	2	3	STS
BL-WG 12063	1200	x	600	x	300	2	3	STS
BL-WG 12083	1200	x	800	x	300	2	3	STS
BL-WG 12084	1200	x	800	x	400	2	3	STS
BL-WG 12103	1200	x	1000	x	300	2	3	STS
BL-WG 12104	1200	x	1000	x	400	2	3	STS
BL-WG 14103	1400	x	1000	x	300	2	3	STS
BL-WG 14104	1400	x	1000	x	400	2	3	STS